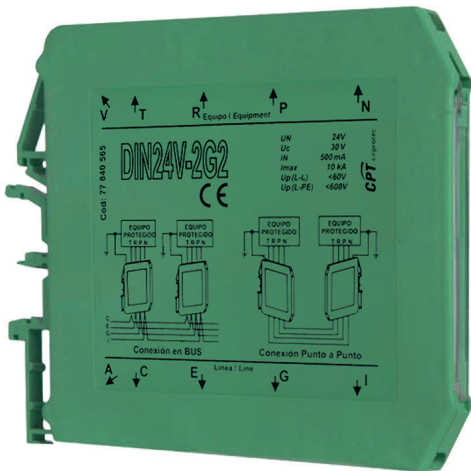


DIN V G Digital for PLC- 2G2

Signal Line SPDs
Measurement and Control



General Data

No. DIN rail modules	0,5
Format	DIN
Product standards	IEC 61643-21; EN 61643-21



PART NUMBERS

XX	24	48
DIN XXV-2G2	77840565	77840566

SURGE PROTECTION DEVICE (SPD) - IEC TECHNICAL FEATURES

DIN XXV-2G2	24	48
Maximum continuous operating voltage (AC) - U_c (L-PE) [V]	30	55
Nominal voltage AC 50-60Hz - U_n (L1/L2-PE) [V]	24	48
Nominal discharge current (8/20) - I_n (L-PE) [kA]		5
Max Discharge Current (8/20) - I_{max} (L-PE) [kA]		10
Rated current load - I_L [mA]		500
Voltage protection level at I_n - U_p (L1-L2) [V]	≤ 60	≤ 180
Voltage protection level at I_n - U_p (L1/L2-PE) [V]	≤ 600	≤ 900
Response time - t_A (L-PE) [ns]		≤ 1

TECHNICAL FEATURES

DIN XXV-2G2	24	48
No. of protected pairs		2
Bandwidth [MHz]		2
Max. communication voltage [V]		24

MECHANICAL AND ENVIRONMENTAL FEATURES

DIN XXV-2G2	24	48
Temperature range [°C]		-40 ... 60
Housing color		Green
Enclosure - IP		IP20
Flammability class		UL94 V-0
Input connector		Terminal
Stranded conductor cross section		2,5 mm ²

DATASHEET

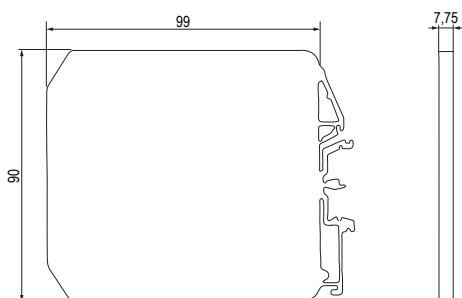
This document is subject to change at any time without notice www.cirprotec.com | Lepanto 49 · 08223 Terrassa, Barcelona Spain © 2024 Cirprotec SLU | All rights reserved

cirprotec

DIN V G Digital for PLC- 2G2

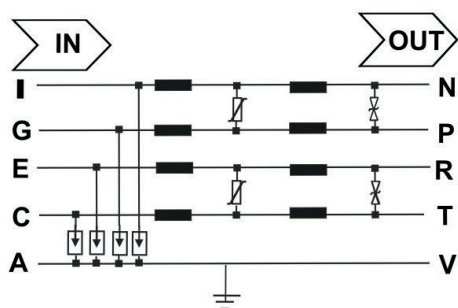
Signal Line SPDs
Measurement and Control

DIMENSIONS AND WEIGHT



DIN XXV-2G2	24	48
Net Weight [kg]	0.069	
Gross weight [kg]	0.071	
Packaging dimensions (H x W x L) [mm]	150 x 100 x 10	

INTERNAL CONFIGURATION



DATASHEET

This document is subject to change at any time without notice www.cirprotec.com | Lepanto 49 · 08223 Terrassa, Barcelona Spain © 2024 Cirprotec SLU | All rights reserved

cirprotec