

PSC 25 3+1

Power Line SPDs

DIN RAIL - IEC TYPE 1+2



General Data

Internal configuration	3+1
No. Poles	4-Pole
No. DIN rail modules	8
Network configuration	TT, TNS
IEC SPD Type	Class I+II
EN SPD Type	Type 1+2
Format	Pluggable
Protection Modes	L-N / N-PE
Product standards	IEC 61643-11; EN 61643-11



PART NUMBERS

XXX	400
PSC4-25/ XXX TT	77738425
PSC4-25/ XXX TT IR (with Remote Indication)	77738426

SURGE PROTECTION DEVICE (SPD) - IEC TECHNICAL FEATURES

PSC4-25/ XXX TT, PSC4-25/ XXX TT IR (with Remote Indication)	400
Maximum continuous operating voltage (AC) - Uc (L-N) [V]	275
Maximum continuous operating voltage (AC) - Uc (N-PE) [V]	255
Nominal voltage AC 50-60 Hz - Un [V]	230/400
Nominal voltage AC 50-60 Hz - Un(L-L) [V]	400
Nominal voltage AC 50-60 Hz - Un(L-N) [V]	230
Nominal discharge current (8/20) - In (L-N) [kA]	25
Nominal discharge current (8/20) - In (N-PE) [kA]	50
Max Discharge Current (8/20) - I _{max} (L-N) [kA]	100
Max Discharge Current (8/20) - I _{max} (N-PE) [kA]	100
Lightning impulse current (10/350) - I _{imp} (L-N) [kA]	25
Lightning impulse current (10/350) - I _{imp} (N-PE) [kA]	100
Voltage protection level at In - Up (L-N) [kV]	≤1,5
Voltage protection level at In - Up (N-PE) [kV]	≤1,5
Short circuit withstand- I _{sc} [kA]	25
Following current - I _{fi} [A]	100
Response time - t _A (L-N) [ns]	≤25
Response time - t _A (N-PE) [ns]	≤100
Dynamic thermal disconnection	Yes
Thermal protection behaviour	OCM (Open Circuit Mode)

MECHANICAL AND ENVIRONMENTAL FEATURES

PSC4-25/ XXX TT, PSC4-25/ XXX TT IR (with Remote Indication)	400
Temperature range [°C]	-40 ... 85
Humidity range [%]	5 ... 95

DATASHEET

This document is subject to change at any time without notice www.cirprotec.com | Lepanto 49 · 08223 Terrassa, Barcelona Spain © 2024 Cirprotec SLU | All rights reserved

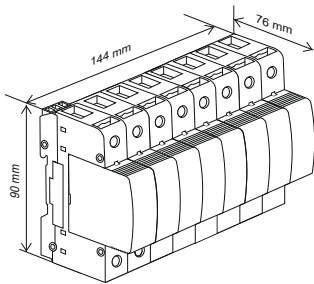
cirprotec

PSC 25 3+1

Continue PSC4-25/XXX TT, PSC4-25/XXX TT IR (with Remote Indication)

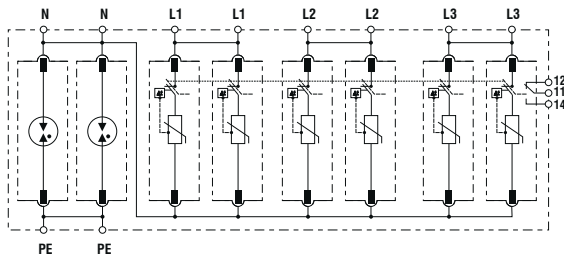
PSC4-25/XXX TT, PSC4-25/XXX TT IR (with Remote Indication)	400
Indication System Type	Green (OK) / Not green (replace)
Insulating material	PA66 CT1
Enclosure - IP	IP20
Flammability class	UL94 V-0
Solid conductor cross section	6...35 mm ²
Stranded conductor cross section	6...25 mm ²
Torque rating [N m]	3
Remote indication conductor cross section [mm ²]	0.08 ... 1.5
Remote indication switching capacity [V/A]	AC: 125/0.2 DC: 250/1
Remote Indication Torque [N m]	0.2

DIMENSIONS AND WEIGHT



PSC4-25/XXX TT PSC4-25/XXX TT IR (with Remote Indication)	400
Net Weight [kg]	1.291
Gross weight [kg]	1.39
Packaging dimensions (H x W x L) [mm]	145 x 136 x 86

INTERNAL CONFIGURATION



REPLACEMENT CARTRIDGES

PSC4-25/XXX TT PSC4-25/XXX TT IR (with Remote Indication)	400
PSC-25/XXX (Line)	77738611
PSC-100N (Neutral)	77738619

DATASHEET

This document is subject to change at any time without notice www.cirprotec.com | Lepanto 49 · 08223 Terrassa, Barcelona Spain © 2024 Cirprotec SLU | All rights reserved

cirprotec