

PSM 8YPV

Photovoltaic & Energy Storage SPDs
DIN RAIL - IEC TYPE 2 PV



General Data

Internal configuration	6+, 1-, PE
No. DIN rail modules	8
Network configuration	8YPV
IEC SPD Type	Class II
EN SPD Type	PV Type 2
UL SPD Type	Type 2 Component Assembly
Format	Pluggable
Protection Modes	L+/PE, L-/PE, L+/L-
Product standards	IEC/EN 61643-31; UL 1449 5th Edition



PART NUMBERS

XXXX	1000
PSM8-40/ XXXX PV	77707968
PSM8-40/ XXXX PV IR (with Remote Indication)	77707969

SURGE PROTECTION DEVICE (SPD) - IEC TECHNICAL FEATURES

PSM8-40/ XXXX PV, PSM8-40/ XXXX PV IR (with Remote Indication)	1000
Maximum continuous operating voltage (DC) - Ucpv [V]	1060
Nominal discharge current (8/20)- In [kA]	20
Max Discharge Current (8/20) - Imax [kA]	40
Voltage protection level at In - Up (L-L) [kV]	≤4
Voltage protection level at In - Up (L-PE) [kV]	≤4
Short Circuit Withstand- Iscpv [kA]	10
Response time - tA [ns]	≤25
Dynamic thermal disconnection	Yes
Thermal protection behaviour	OCM (Open Circuit Mode)

SURGE PROTECTION DEVICE (SPD) - UL TECHNICAL FEATURES

PSM8-40/ XXXX PV, PSM8-40/ XXXX PV IR (with Remote Indication)	1000
Nominal discharge current (8/20) - In [kA]	20
Maximum continuous operating voltage - MCOV (DC DC-) [V]	1000
Maximum continuous operating voltage - MCOV (DC+ G) [V]	1000
Voltage protection rating - VPR (DC- G) [V]	3000
Voltage protection rating - VPR (DC+ DC-) [V]	3000
Voltage protection rating - VPR (DC+ G) [V]	3000
Short-Circuit Current Rating-SCCR [kA]	50

MECHANICAL AND ENVIRONMENTAL FEATURES

PSM8-40/ XXXX PV, PSM8-40/ XXXX PV IR (with Remote Indication)	1000
Temperature range [°C]	-40 ... 85
Humidity range [%]	5 ... 95

DATASHEET

This document is subject to change at any time without notice www.cirprotec.com | Lepanto 49 · 08223 Terrassa, Barcelona Spain © 2024 Cirprotec SLU | All rights reserved

cirprotec

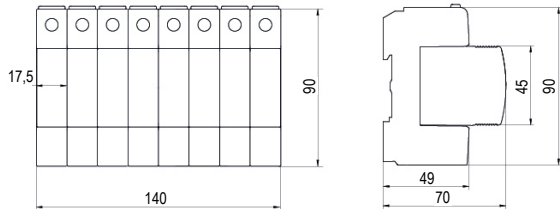
PSM 8YPV

Photovoltaic & Energy Storage SPDs
DIN RAIL - IEC TYPE 2 PV

Continue PSM8-40/XXXX PV, PSM8-40/XXXX PV IR (with Remote Indication)

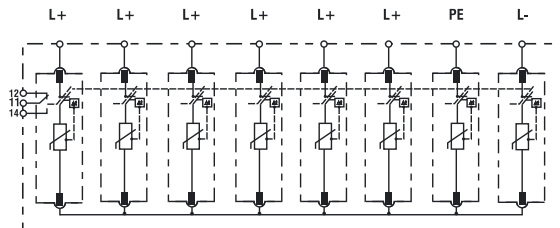
PSM8-40/XXXX PV, PSM8-40/XXXX PV IR (with Remote Indication)	1000
Indication System Type	Green (OK) / Not green (replace)
Insulating material	PA66 CT1
Enclosure - IP	IP20
Flammability class	UL94 V-0
Solid conductor cross section	6...35 mm ²
Stranded conductor cross section	6...25 mm ²
Torque rating [N m]	3
Remote indication conductor cross section [mm ²]	0.08 ... 1.5
Remote indication switching capacity [V/A]	AC: 125/3 DC: 250/1
Remote Indication Torque [N m]	0.2

DIMENSIONS AND WEIGHT



PSM8-40/XXXX PV PSM8-40/XXXX PV IR (with Remote Indication)	1000
Net Weight [kg]	0.877
Gross weight [kg]	0.946
Packaging dimensions (H x W x L) [mm]	145 x 136 x 86

INTERNAL CONFIGURATION



REPLACEMENT CARTRIDGES

PSM8-40/XXXX PV PSM8-40/XXXX PV IR (with Remote Indication)	1000
PSM-40/XXXX PV (Line)	77707657

DATASHEET

This document is subject to change at any time without notice www.cirprotec.com | Lepanto 49 · 08223 Terrassa, Barcelona Spain © 2024 Cirprotec SLU | All rights reserved

cirprotec