

V-CHECK 4RP T12

Power Frequency Overvoltage Protection Devices
SPD+POP



General Data

Internal configuration	3+1
No. Poles	8-Pole
No. poles + configuration	4 Poles, 3P+N
No. DIN rail modules	8
Network configuration	TT, TNS
IEC SPD Type	Class I+II
EN SPD Type	Type 1+2
Format	Pluggable
Protection Modes	L-N / N-PE
Product standards	EN 61643-11



PART NUMBERS

XXX	4RP
V-CHECK XXX T12	77706591
V-CHECK XXX T12 IR (with Remote Indication)	77706593

POWER FREQUENCY OVERVOLTAGE PROTECTOR (POP)

V-CHECK XXXX T12, V-CHECK XXXX T12 IR (with Remote Indication)	4RP
Actuation method	Shunt release
Test button	Yes

Limit values for response and non-response times according to UNE-EN 50550:

Voltages (V)	255					275					300					350					400				
	No tripping																								
Maximum break time (s)						15					5					0,75					0,20				
Minimum non-actuating time (s)						3					1					0,25					0,07				

SURGE PROTECTION DEVICE (SPD) - IEC TECHNICAL FEATURES

V-CHECK XXXX T12, V-CHECK XXXX T12 IR (with Remote Indication)	4RP
Maximum continuous operating voltage (AC) - Uc (L-N) [V]	275
Maximum continuous operating voltage (AC) - Uc (N-PE) [V]	255
Nominal voltage AC 50-60 Hz - Un [V]	230/400
Nominal voltage AC 50-60 Hz - Un(L-L) [V]	400
Nominal voltage AC 50-60 Hz - Un(L-N) [V]	230
Nominal discharge current (8/20) - In (L-N) [kA]	20
Nominal discharge current (8/20) - In (N-PE) [kA]	50
Max Discharge Current (8/20) - Imax (L-N) [kA]	65
Voltage protection level at In - Up (L-N) [kV]	≤1,3
Voltage protection level at In - Up (N-PE) [kV]	≤1,5
Following current - Ifi [A]	100
Response time - tA (L-N) [ns]	≤25
Response time - tA (N-PE) [ns]	≤100
Dynamic thermal disconnection	Yes

DATASHEET

This document is subject to change at any time without notice www.cirprotec.com | Lepanto 49 · 08223 Terrassa, Barcelona Spain © 2024 Cirprotec SLU | All rights reserved

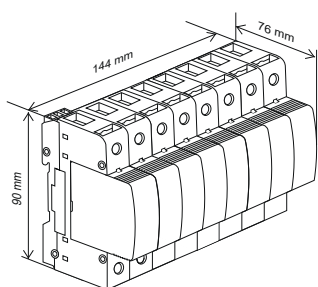
cirprotec

V-CHECK 4RP T12

MECHANICAL AND ENVIRONMENTAL FEATURES

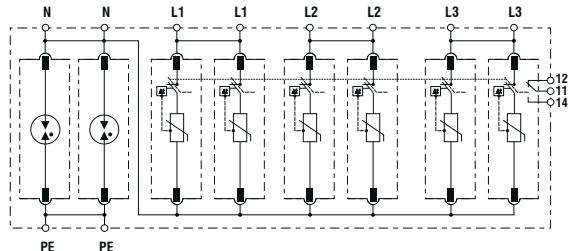
V-CHECK XXXX T12, V-CHECK XXXX T12 IR (with Remote Indication)	4RP
Temperature range [°C]	-5 ... 40
Humidity range [%]	5 ... 95
Indication System Type	LED
Insulating material	PA66 CT1
Enclosure - IP	IP20
Flammability class	UL94 V-0

DIMENSIONS AND WEIGHT



V-CHECK XXXX T12 V-CHECK XXXX T12 IR (with Remote Indication)	4RP
Net Weight [kg]	0.921
Gross weight [kg]	1.074
Packaging dimensions (H x W x L) [mm]	145 x 136 x 86

INTERNAL CONFIGURATION



DATASHEET