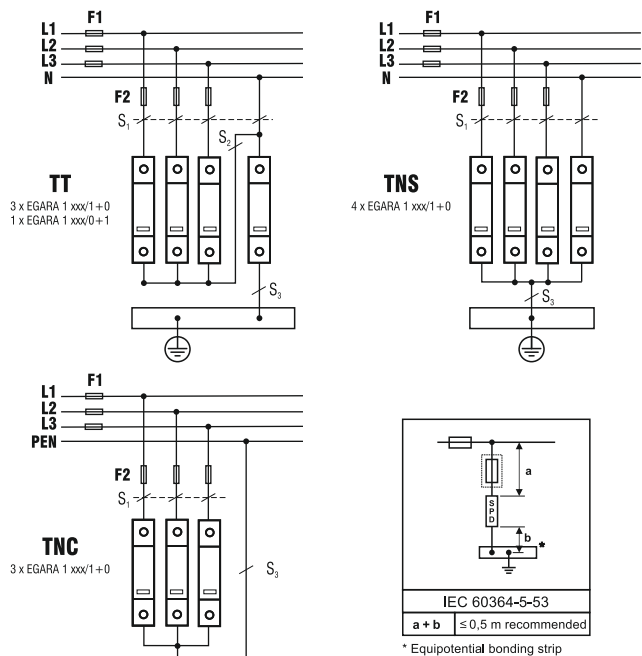


Class I+II
IEC 61643-11
Type 1+2
EN 61643-11

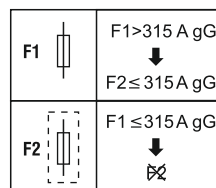
TT/TNS/TNC One port device



Type of wire	FLEXIBLE / STRANDED	RIGID
min. □ L,N,⊕	min 1,5 mm ²	
max. □ L,N,⊕	25 mm ²	35 mm ²
□	16 mm ² Cu	≥ 15 mm ²

	EGARA 1 xxx/1+0 (IR)				EGARA 1 xxx/0+1 (IR)
	175	275	320	440	N
Installation	L - N / N - PE, TNS / TNC / TT(only L-N)				N - PE, TT
Uc (50-60 Hz)	175 V	275 V	320 V	440 V	255 V
Un (50/60 Hz)	120 V	230 V	277 V	400 V	Neutral
I _{imp}	12,5 kA				50 kA
I _N	20 kA				50 kA
I _{R1}	-				100 A
I _{SCCR}	25 kA				-
I _{PE}	<1 mA				<10 μA
	max. 315 A gG ^(*)				-
IP code / Location	20 / Indoor				-
SPD failure mode	-40 °C ... +85 °C / 5 % ... 95 %				Open circuit

(*) According to IEC 61643-11



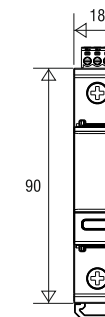
F1 A gG	S ₁ / mm ²	S ₂ / mm ²	S ₃ / mm ²	F2 A gG
≤63	10	16	16	---
80	10	16	16	---
100	16	16	16	---
125	16	16	16	---
160	25	25	25	---
200	25	25	25	---
250	25	25	25	---
315	25	25	25	---
>315	25	25	25	315

(IR) Optional

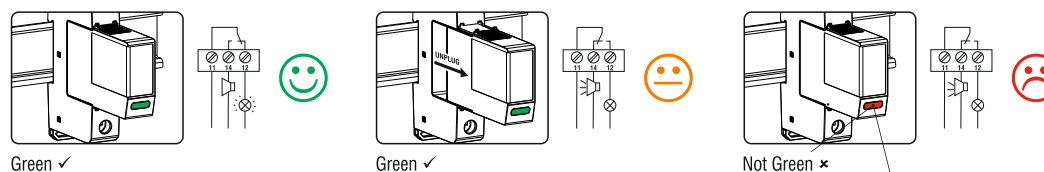
	U _{max} / I _{max}
AC:	250 V/0,5 A
DC:	125 V/0,2 A 30 V/1 A

min 0,5 mm²
max 1,5 mm²

L x W x H (mm)

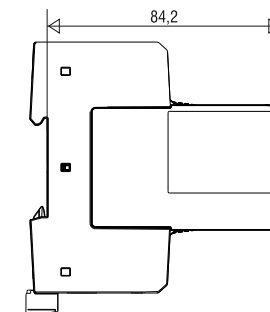


Protection status: Visual & remote indication



Replacement cartridges

EGARA 1 xxx				
175	275	320	440	N
33738011	33738001	33738003	33738005	33738000



- GB Installation instruction
- ES Instrucciones de instalación
- NL Montagehandleiding
- PL Instrukcja montażu
- IT Istruzioni di montaggio
- DE Einbauanleitung
- FR Instructions de montage
- PT Instruções de montagem
- EE Navodila za namestitve
- JP 設置説明書
- CN 安装说明
- SE Monteringsanvisning
- LT Montavimo instrukcijos
- CZ Návod k montáži
- TR Montaj kılavuzu
- FI Asennusohje
- BG Инструкции за инсталация
- DK Monteringsvejledning
- HU Szerelési útmutató

